

235 DAWSON HARBOUR COURT - DAWSON'S LANDING,  
CHESTERMERE

THE MERRITT 2



MOVE IN READY

\$833,900



2124 SQ FT



3 BEDROOMS



2.5 BATHROOMS



DOUBLE CAR GARAGE

## HOME FEATURES

- Mudroom - Pantry Walkthrough
- Stainless Steel Appliances
- Spacious Bonus Room
- Open Concept Layout
- Soft-close Doors & Drawers
- Luxurious Primary Ensuite Bath
- Upstairs Laundry
- 9' Main Floor Ceilings



Use the camera app on your phone to scan here



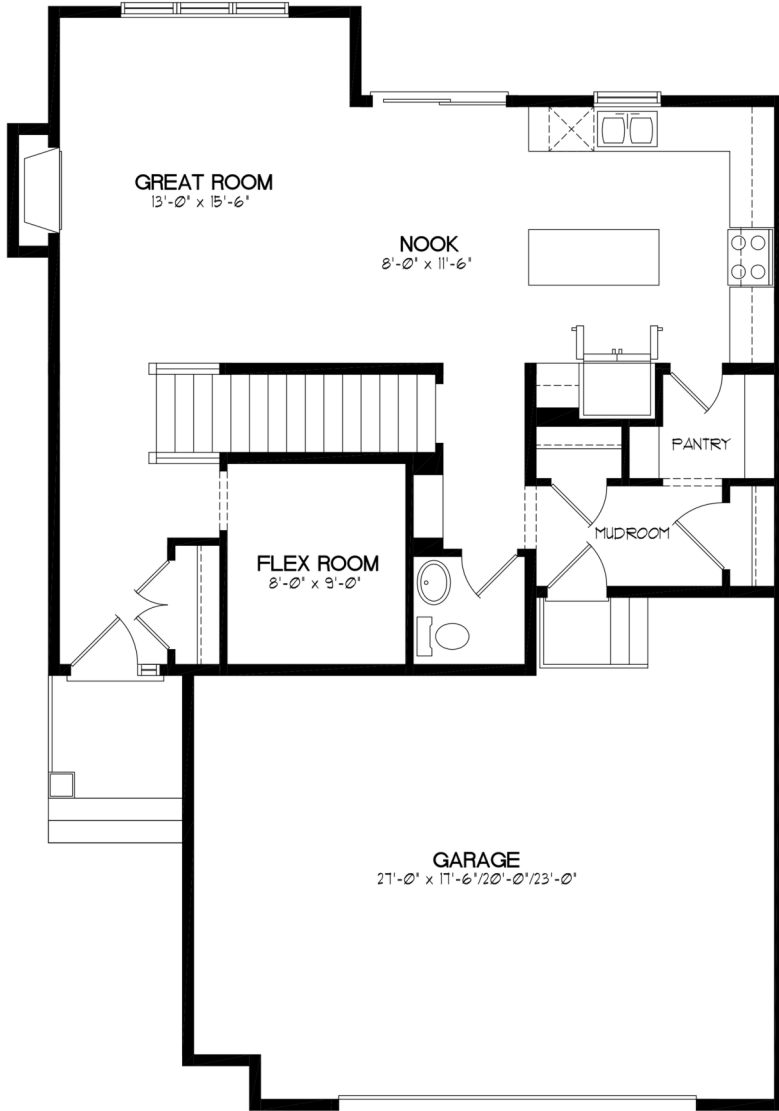
JEFF MITCHELL & COLE WILLIAMSON

403.870.3632

[jmitchell@broadviewhomes.com](mailto:jmitchell@broadviewhomes.com)



A QUALICO Company



**MAIN FLOOR - 875 SQFT**



**UPPER FLOOR - 1249 SQFT**

Broadview Homes reserves the right to change plans, features, and specifications without notice. Prices are subject to change without obligation or notice. Square footage is approximate. Elevations, features, and square footages may vary by area.