

At Broadview Homes we believe that life's luxuries should come standard. Thoughtfully designed and built with the utmost care, you will find Broadview Homes gives you the best of both worlds. Each of our homes are customizable to ensure they fit your every need.



A QUALICO Company

Lorem ipsum

Showhome: 121 Creekstone Hill SW

facebook.com/BroadviewHomes

broadviewhomes.com

follow us on  

SUTTON



WELCOME TO THE SUTTON

2517 SQ FT

4 BED 2.5 BATH

OPTIONAL UPPER FLOOR PLAN AVAILABLE

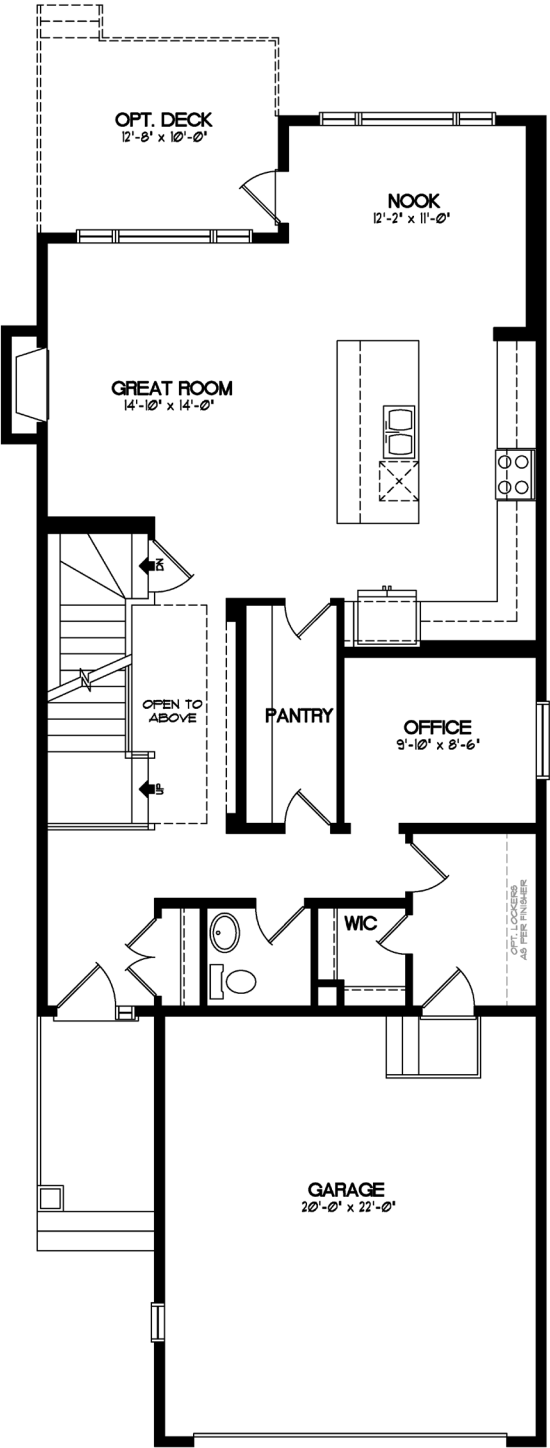


A QUALICO Company

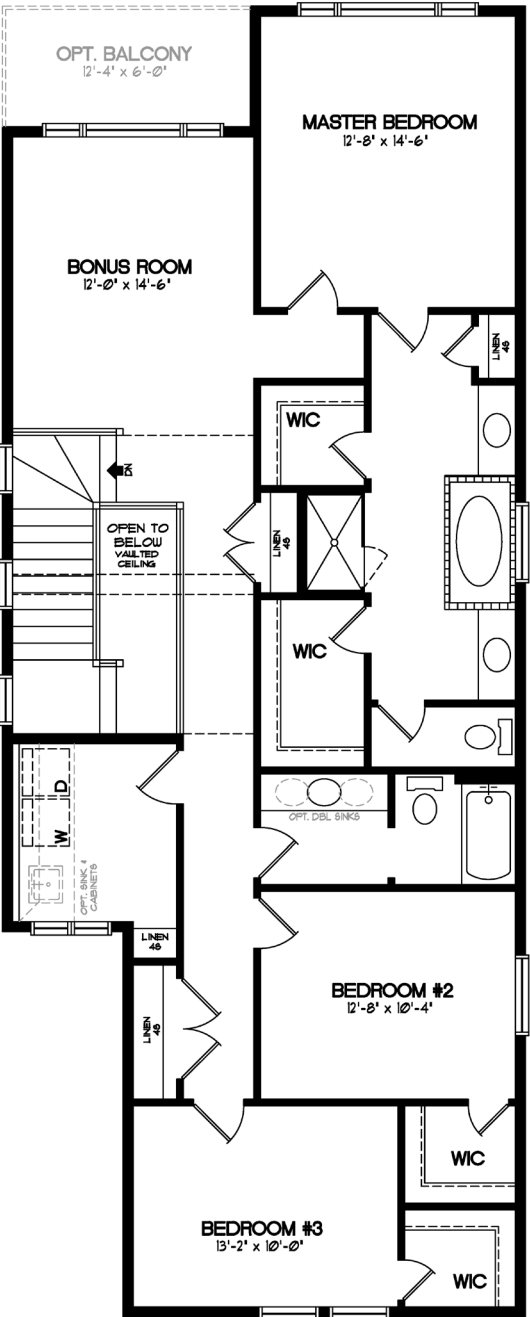
SUTTON

TWO STOREY 2517 SQ. FT.

The Sutton is a home that seamlessly blends comfort and style, making it an inviting retreat. Upon entering the welcoming Foyer, you're presented with choices—a quick stop at the convenient Powder Room, perhaps a visit to your private Office, or a pause in the Mudroom off the front hall. Alternatively, you can explore the heart of the home—the spacious chef's Kitchen, thoughtfully designed with a central island and a walk-through Pantry. It overlooks both the Great Room and the Dining Area, creating a warm and inviting space. The Sutton also offers the flexibility of an optional 4-Bedroom Upper Floor, catering to your family's unique needs. On the upper level, you'll find the Laundry and Bonus Room, adding convenience to your daily routines. Each of the three spacious Bedrooms comes complete with a generously sized walk-in Closet, ensuring ample storage and personal space. The Master En-suite stands out with double walk-in Closets, creating a haven of organization and luxury. The Sutton promises a harmonious blend of comfort and elegance that you'll cherish.



MAIN FLOOR - 1122 SQ. FT.



UPPER FLOOR - 1395 SQ. FT.

THE HUDSON IN PINE CREEK STYLES

Welcome to Hudson in Pine Creek, where Broadview Homes alone offers life on the ridge! Our lineup of homes has been designed to maximize views and to complement your lifestyle.

Overlooking the picturesque Pine Creek Coulee, this community connects residents to nature with pathways, views, and parks that are rare within City limits. The contemporary interpretations of classic home styles add to the cozy community feeling which harkens back to simpler times while creating a chic and cohesive streetscape.

See a Broadview Homes representative to learn more about how we have brought these styles to life.



MODERN FARMHOUSE

A classic elevation with modern appeal thanks to practical details that add significant style to any home. High pitched roofs, often accented with dormers, gables, or brackets, are typical of a Farmhouse home. Horizontal siding, shutters, and symmetrical windows are also a hallmark of this style.



MODERN PRAIRIE

This distinctive style harkens back to Frank Lloyd Wright and similar designs of the early 20th century in the American Mid-West. Homes are unique and simplistic with strong horizontal lines, shallow pitched roofs, and large overhanging eaves. Mason work, wide porches, and rows of windows with minimal detailing often stand out on the Modern Prairie homes.

Elevation is representation of given home style and may not be built exactly as shown.

* Broadview Homes reserves the right to change plans, features and specifications without notice. Options NOT included except as specifically itemized in the purchase agreement. Standards/reversed plans at the sole discretion of the builder. Square footage is approximate. Elevations, features and square footages may vary by area. Photos of house may not be exactly as shown.