

At Broadview Homes we believe that life's luxuries should come standard. Thoughtfully designed and built with the utmost care, you will find Broadview Homes gives you the best of both worlds. Each of our homes are customizable to ensure they fit your every need.



A QUALICO Company

Lorem ipsum

Showhome: 48 & 26 Elderberry Way

[facebook.com/BroadviewHomes](https://facebook.com/BroadviewHomes)

[broadviewhomes.com](https://broadviewhomes.com)

follow us on  

# KORNELL



## WELCOME TO THE KORNELL

2321 SQ. FT.

3 BED 2.5 BTH

OPEN CONCEPT, BONUS ROOM



A QUALICO Company



# KORNELL

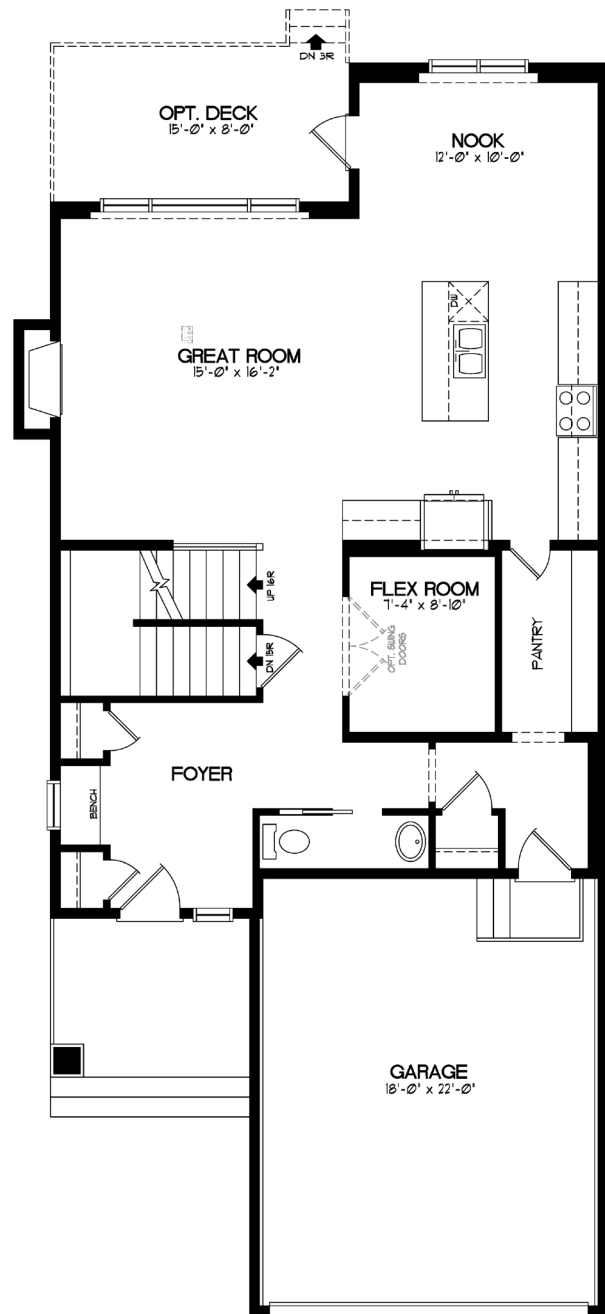
TWO STOREY 2321 SQ. FT.

The Kornell, a versatile 2321 sq. ft. home, accommodates various lifestyles.

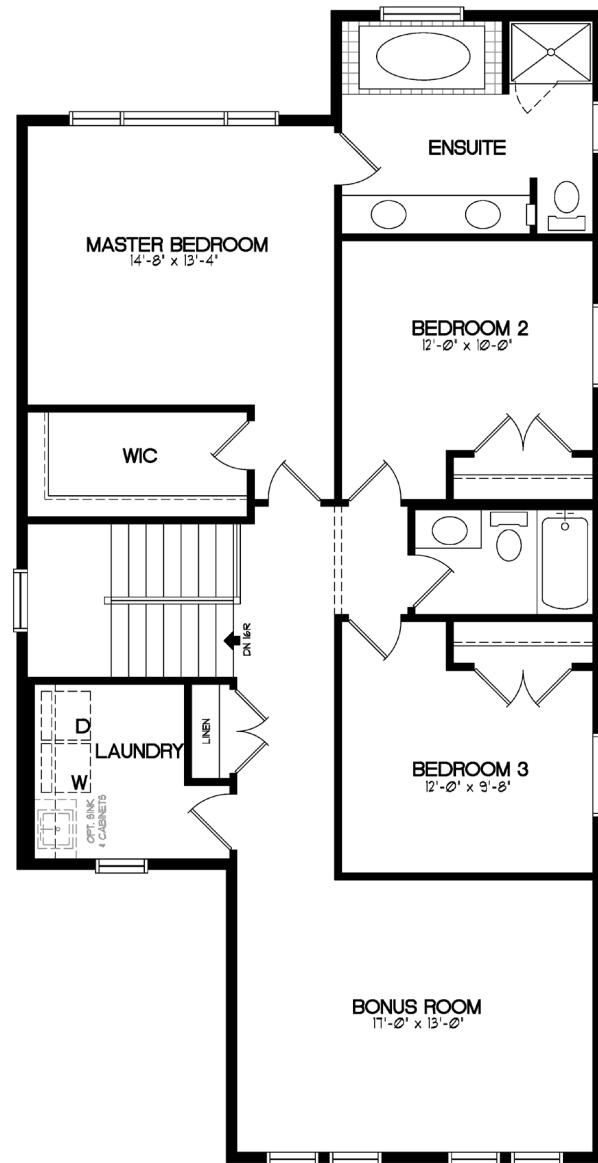
The welcoming foyer with dual closet, drawers, and a bench sets the stage. The open main floor reveals a spacious Great Room, a well-appointed Kitchen with an island, and a convenient Walk-through Pantry.

The upper floor offers a Laundry Room, full Bathroom, 2 Bedrooms, and a vaulted Bonus Room. The Spacious Master Retreat features a generous Walk-in Closet and a luxurious En-suite.

An alternate floor plan includes a Walk-in Pantry and an extended Flex Room for added space and versatility. The Kornell is thoughtfully designed to cater to your unique needs, promising a lifestyle that's truly exceptional.



MAIN FLOOR - 1064 SQ. FT.



UPPER FLOOR - 1257 SQ. FT.

## THE STYLES OF HARMONY

Welcome to Broadview's selection of homes in Harmony, a place that began with the question "what if we re-thought what community can be?" In this same spirit, Broadview has reimagined how your home can serve you.

Harmony's unique architectural styles have been thoughtfully selected to capture a unique sense of place, with a cohesive blend of traditional and modern styles to choose from. Learn more about each distinct style below, and speak with a Broadview representative to find out how we can bring each one to life to suit your tastes.



### ARTS & CRAFTS

Stemming from the 19th century American architectural philosophy, Arts & Crafts homes generally feature a low-pitched roof and wide eave overhang, with exposed roof rafters and decorative beams or braces under the gables. Columns are very important and frequently extend to ground level. False beams and/or brackets are encouraged as roof supports while stone may appear as an element but not as a full façade. Exterior choices are vinyl siding, Hardi board, Allura siding, or stucco.



### CONTEMPORARY

Increasingly appealing to today's modern family, Contemporary homes include simple, clean lines with flat or gabled roofs and large windows devoid of decorative trim. Open floor plans, asymmetrical shapes, and a lack of ornamentation are common. Exteriors are stucco, stone, brick, or wood with natural materials throughout to encourage indoor/outdoor living. With large expanses of glass, some use of columns for structure, and abundant natural light, Contemporary homes showcase high quality through disciplined design.



### DUTCH COLONIAL/COLONIAL

Historically found mostly on the eastern side of the continent, Dutch Colonial is one of the most distinguishable styles of architecture in North America. The most distinguishable feature is its broad, double-pitched roof: wide at the top then changing angles to slope almost straight down, resembling a barn roof. Originally only one room deep and two or three rooms wide, these homes have evolved to suit families of all sizes today and bring historical flavour to any modern street.



### FARMHOUSE

A style characterized by large wrap-around verandas, steeply pitched roofs, often accented with dormers, gables, and brackets. Simple details commonly found on Farmhouse homes include horizontal siding, shutters, and symmetrical windows. Features are kept clean and crisp.



### PRAIRIE

This distinctive style harkens back to Frank Lloyd Wright designs of the early 20th century. Unique and simplistic due to their square design, Prairie homes maintain their individuality through use of various heights and depths. Homes have low pitched roofs with widely overhanging eaves. Prairie style emphasizes horizontal lines, square front porch supports, bands of casement windows, and decorative banding along exterior walls. Exterior cladding is to be vinyl siding, Hardi board, Allura siding, or stucco and different floors may use contrasting materials.

Elevation is representation of given home style and may not be built exactly as shown.

\* Broadview Homes reserves the right to change plans, features, and specifications without notice. Options NOT included except as specifically itemized in the purchase agreement. Standards/reversed plans at the sole discretion of the builder. Square footage is approximate. Elevations, features, and square footages may vary by area. Photos of house may not be exactly as shown.



[broadviewhomes.com](http://broadviewhomes.com)  
follow us on