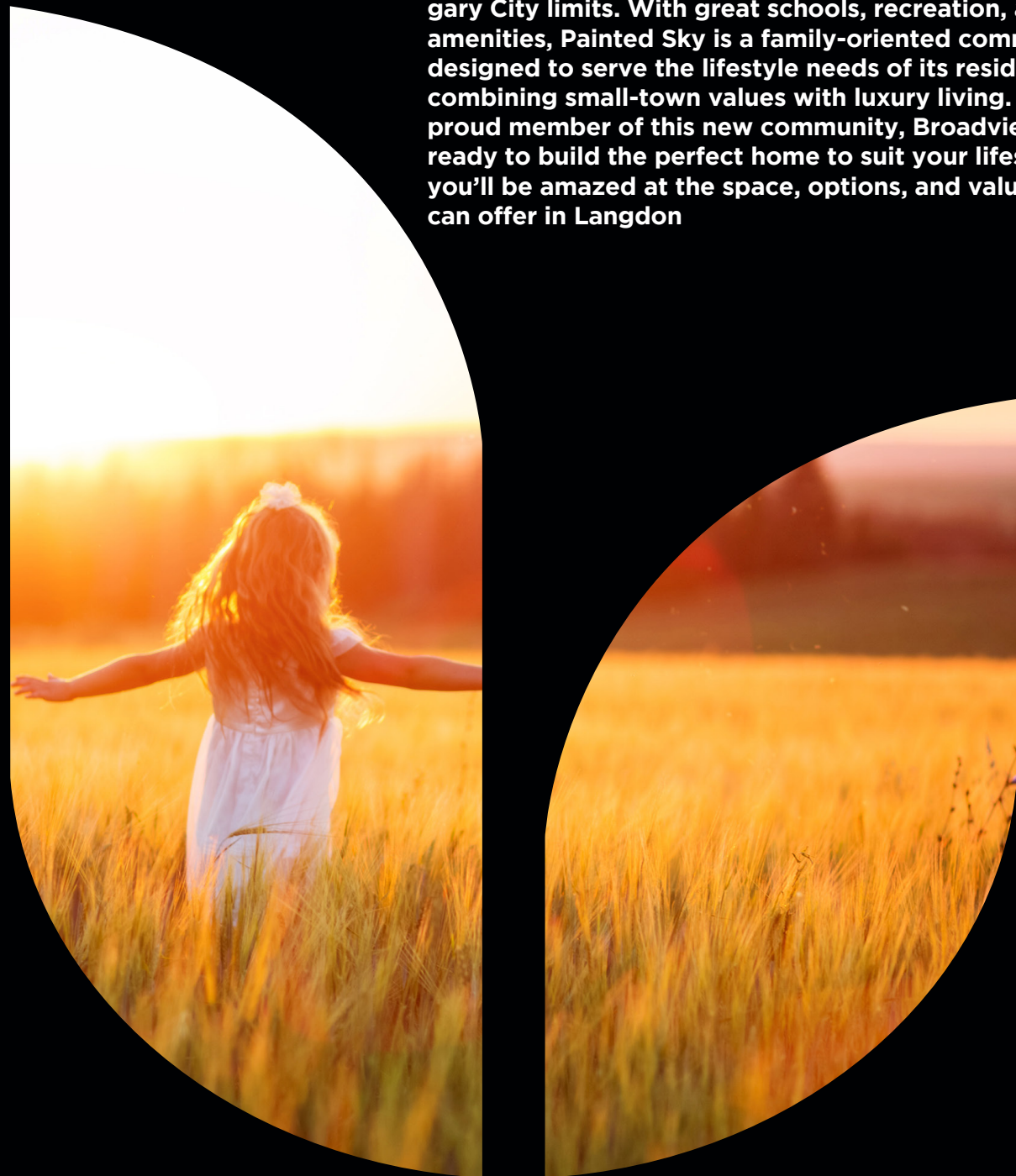


Painted Sky is a neighbourhood set aside from the stress of busy urban life, just 20 minutes east of Calgary City limits. With great schools, recreation, and amenities, Painted Sky is a family-oriented community designed to serve the lifestyle needs of its residents by combining small-town values with luxury living. As a proud member of this new community, Broadview is ready to build the perfect home to suit your lifestyle; you'll be amazed at the space, options, and value we can offer in Langdon



A QUALICO<sup>®</sup> Company

Showhome: 207 Brander Avenue

[facebook.com/BroadviewHomes](https://facebook.com/BroadviewHomes)

[broadviewhomes.com](https://broadviewhomes.com)

follow us on   

# HUDSON II



## WELCOME TO THE HUDSON II

2654 SQ FT

4 BED 2.5 BATH

CHEF'S KITCHEN, TRIPLE CAR GARAGE



A QUALICO<sup>®</sup> Company

# HUDSON II

TWO STOREY 2654 SQ. FT.

The **Hudson II** is an open concept, 2 Storey home with 2654 square feet of contemporary space. With a Dining Nook, Great Room, and large Chef's Kitchen on the first floor in addition to the warm Foyer and Flex Room (with optional coffered ceiling) the main floor is inviting and open. The second-floor houses 4 Bedrooms, including Master with En-suite and Walk-in Closet, and the spacious Bonus Room has the option of a tray ceiling while the adjacent Laundry Room includes an optional sink and cabinetry. With the additional option of adding a 4-car garage and a covered deck, this home offers space and flexibility for all lifestyles!

# THE PAINTED SKY STYLES

Welcome to the prairie hamlet of Langdon, where small town values and neighbourhood sensibilities weave the very fabric of Painted Sky. With great schools, recreation, and amenities, Painted Sky is a family-oriented community designed to serve the lifestyle needs of its residents by combining small-town values with luxury living. Painted Sky is a spacious community as open and authentic as the boundless prairies, a neighbourhood set aside from the stress of busy urban life. As a proud member of this community, Broadview is ready to build the perfect home to suit your lifestyle; you'd be amazed at the space, options, and value we can offer in Langdon!



### CRAFTSMAN (ARTS & CRAFTS)

Stemming from the 19th century American architectural philosophy, Craftsman homes generally feature a low-pitched roof and wide eaves overhang, with exposed roof rafters and decorative beams or braces under the gables. Columns are very important and frequently extend to ground level. False beams and/or brackets are encouraged as roof supports while stone may appear as an element but not as a full façade. Exterior choices are vinyl siding, Hardi board, Allura siding, or stucco.



### FARMHOUSE

A style characterized by large wrap-around verandas, steeply pitched roofs, often accented with dormers, gables, and brackets. Simple details commonly found on Farmhouse homes include horizontal siding, shutters, and symmetrical windows. Features are kept clean and crisp.



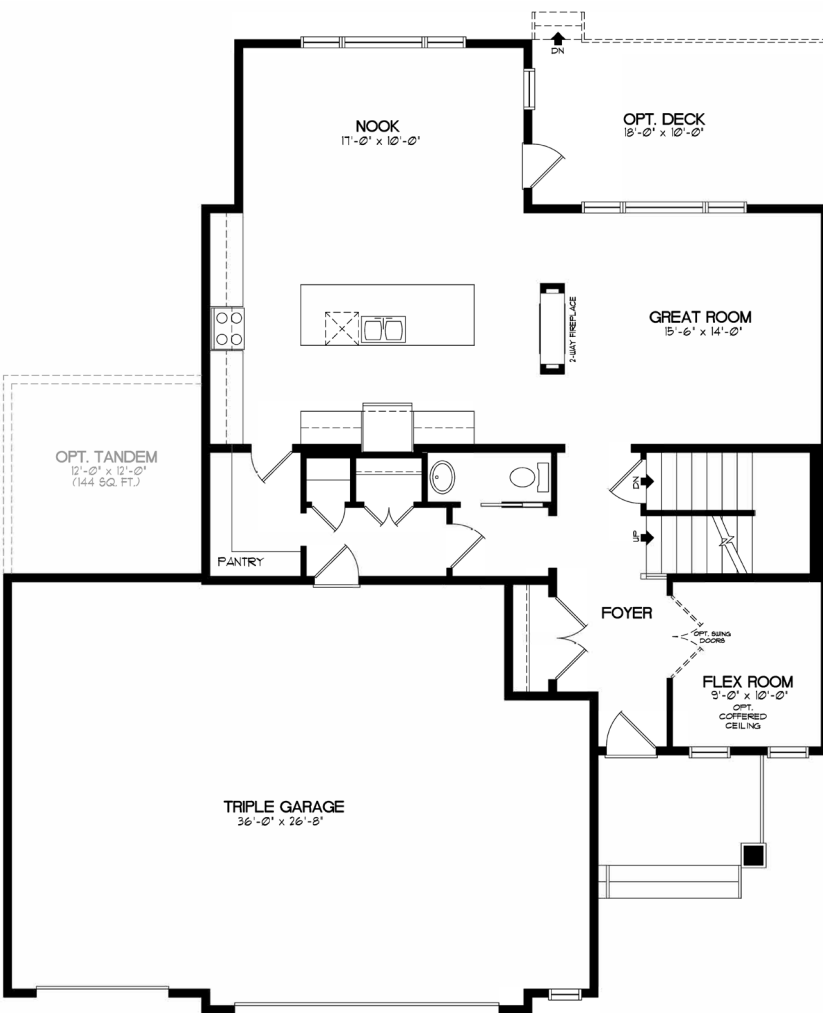
### RANCH

Designed to bring the outdoors 'in', Ranch style homes emphasize generous Ribbon style windows and open floor plans, with rooms often opening onto partially enclosed patios to extend sightlines and square footage. Traditional detailing with moderate to widely overhanging eaves and decorative porch supports, and shutters characterize these homes. Low pitch Hip roofline detailing keeps the façade clean.

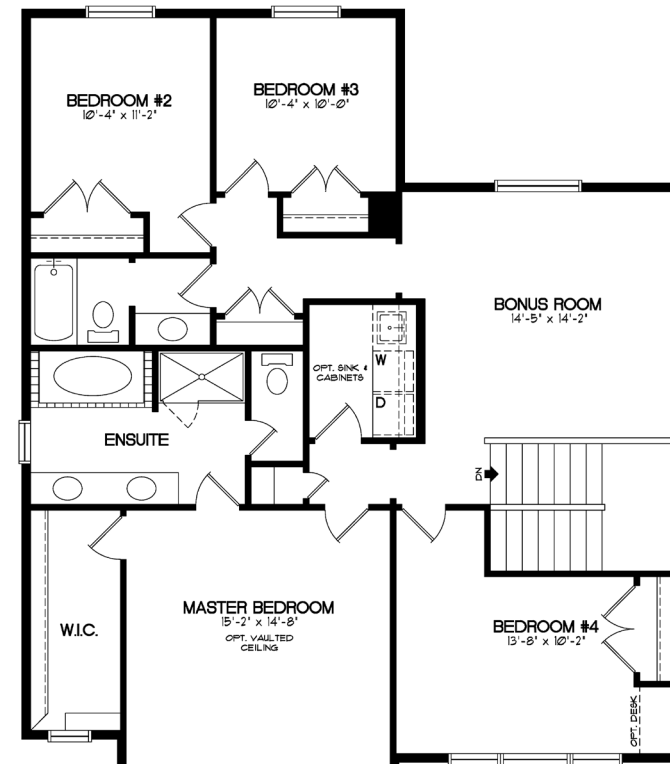


### PRAIRIE (FOURSQUARE)

This distinctive style harkens back to Frank Lloyd Wright designs of the early 20th century. Unique and simplistic due to their square design, Prairie homes maintain their individuality through use of various heights and depths. Homes have low pitched roofs with widely overhanging eaves. Prairie style emphasizes horizontal lines, square front porch supports, bands of casement windows, and decorative banding along exterior walls. Exterior cladding is to be vinyl siding, Hardi board, Allura siding, or stucco and different floors may use contrasting materials.



MAIN FLOOR - 1241 SQ. FT.



UPPER FLOOR - 1413 SQ. FT.

\* Broadview Homes reserves the right to change plans, features and specifications without notice. Options NOT included except as specifically itemized in the purchase agreement. Standards/reversed plans at the sole discretion of the builder. Square footage is approximate. Elevations, features and square footages may vary by area. Photos of house may not be exactly as shown.