




At Broadview Homes we believe that life's luxuries should come standard. Thoughtfully designed and built with the utmost care, you will find Broadview Homes gives you the best of both worlds. Each of our homes are customizable to ensure they fit your every need.



A QUALICO Company

Showhome: 121 Creekstone Hill SW  
[facebook.com/BroadviewHomes](https://facebook.com/BroadviewHomes)  
[broadviewhomes.com](https://broadviewhomes.com)  
follow us on   

# CAMDEN



## WELCOME TO THE CAMDEN

2338 SQ FT  
3 BED 2.5 BATH  
OPEN CONCEPT



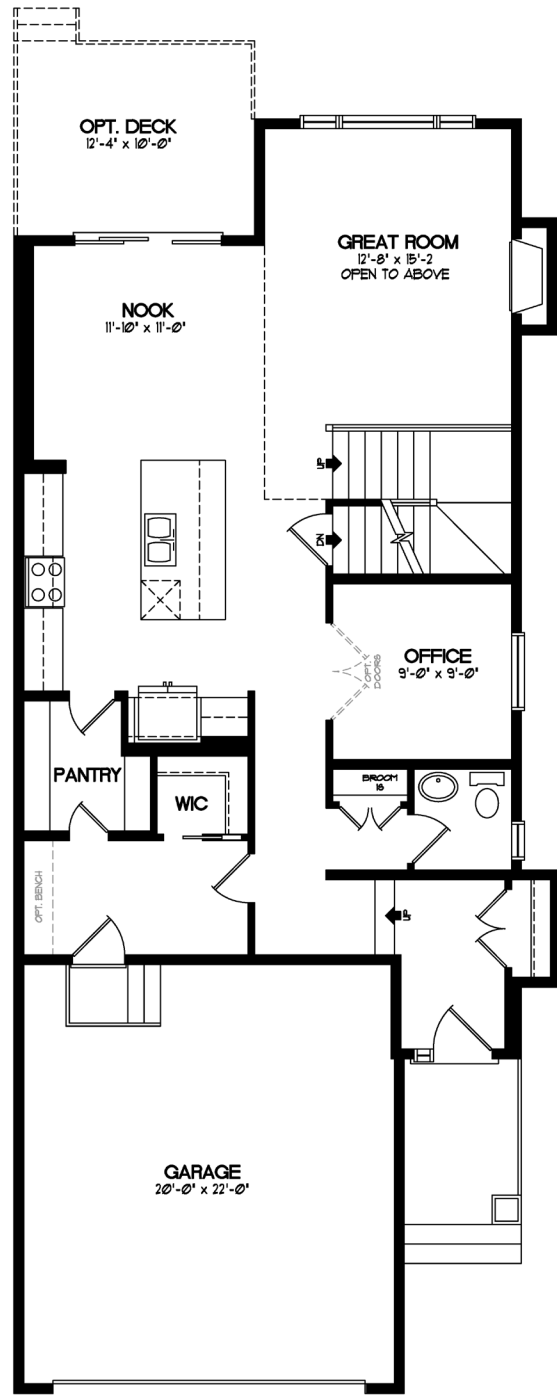
A QUALICO Company



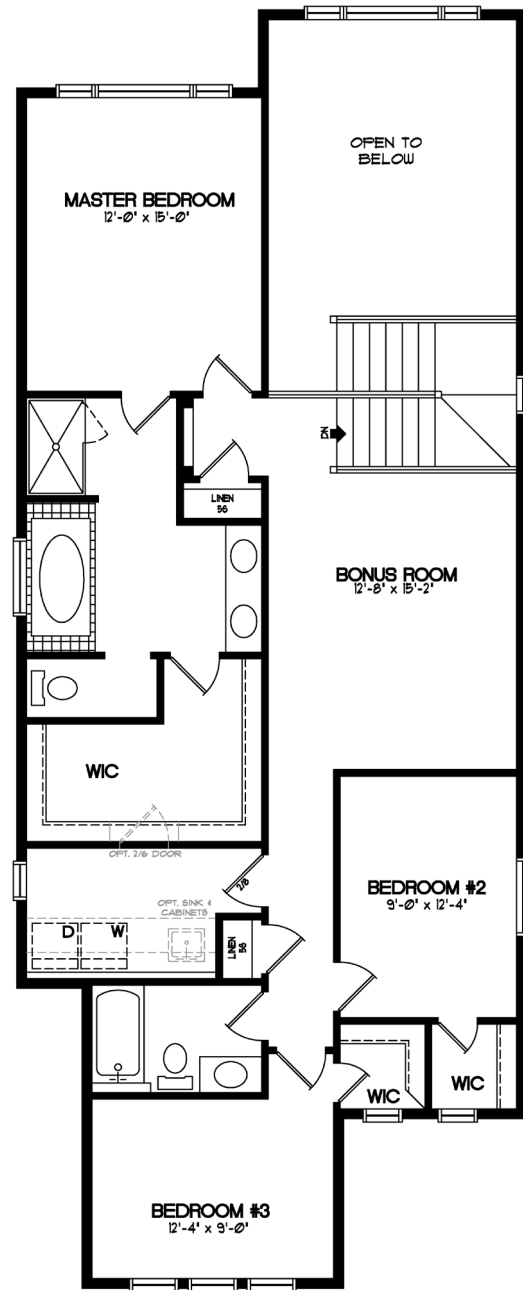
# CAMDEN

TWO STOREY 2338 SQ. FT.

A fresh new plan offering 2338 Sq. Ft. starting with an open main floor with Kitchen, Great Room and Dining Nook flowing seamlessly; and convenient Office, Powder Room, and Mudroom blending practicality and style. Upstairs, place your Bonus Room or Master Bedroom near the rear of the home to take full advantage of valley views. All 3 Bedrooms offer walk-in closets, with a particularly luxurious Master En-suite and closet.



MAIN FLOOR - 1097 SQ. FT.



UPPER FLOOR - 1241 SQ. FT.

# THE HUDSON STYLES

Welcome to Hudson in Pine Creek, where Broadview Homes alone offers life on the ridge! Our lineup of homes has been designed to maximize views and to complement your lifestyle.

Overlooking the picturesque Pine Creek Coulee, this community connects residents to nature with pathways, views, and parks that are rare within City limits. The contemporary interpretations of classic home styles add to the cozy community feeling which harkens back to simpler times while creating a chic and cohesive streetscape.

See a Broadview Homes representative to learn more about how we have brought these styles to life.



## MODERN FARMHOUSE

A classic elevation with modern appeal thanks to practical details that add significant style to any home. High pitched roofs, often accented with dormers, gables, or brackets, are typical of a Farmhouse home. Horizontal siding, shutters, and symmetrical windows are also a hallmark of this style.



## MODERN PRAIRIE

This distinctive style harkens back to Frank Lloyd Wright and similar designs of the early 20th century in the American Mid-West. Homes are unique and simplistic with strong horizontal lines, shallow pitched roofs, and large overhanging eaves. Mason work, wide porches, and rows of windows with minimal detailing often stand out on the Modern Prairie homes.

Elevation is representation of given home style and may not be built exactly as shown.

\* Broadview Homes reserves the right to change plans, features and specifications without notice. Options NOT included except as specifically itemized in the purchase agreement. Standards/reversed plans at the sole discretion of the builder. Square footage is approximate. Elevations, features and square footages may vary by area. Photos of house may not be exactly as shown.