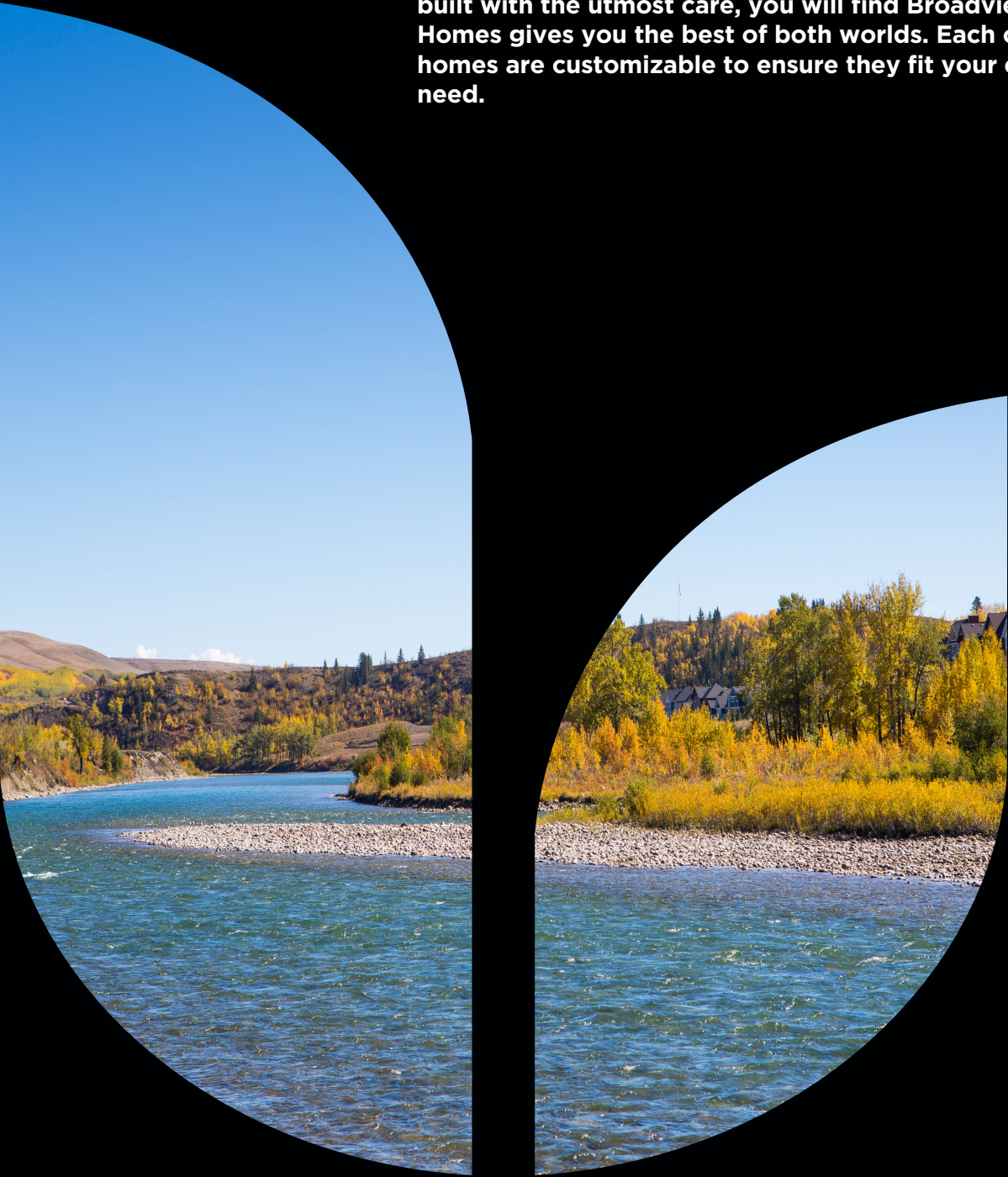





At Broadview Homes we believe that life's luxuries should come standard. Thoughtfully designed and built with the utmost care, you will find Broadview Homes gives you the best of both worlds. Each of our homes are customizable to ensure they fit your every need.



A QUALICO Company

Showhome: 384 Rivercrest View
facebook.com/BroadviewHomes
broadviewhomes.com
follow us on   

TALLYN



WELCOME TO THE TALLYN
2629 SQ FT
3 BD 2.5 BTH
OPEN CONCEPT WITH BONUS ROOM

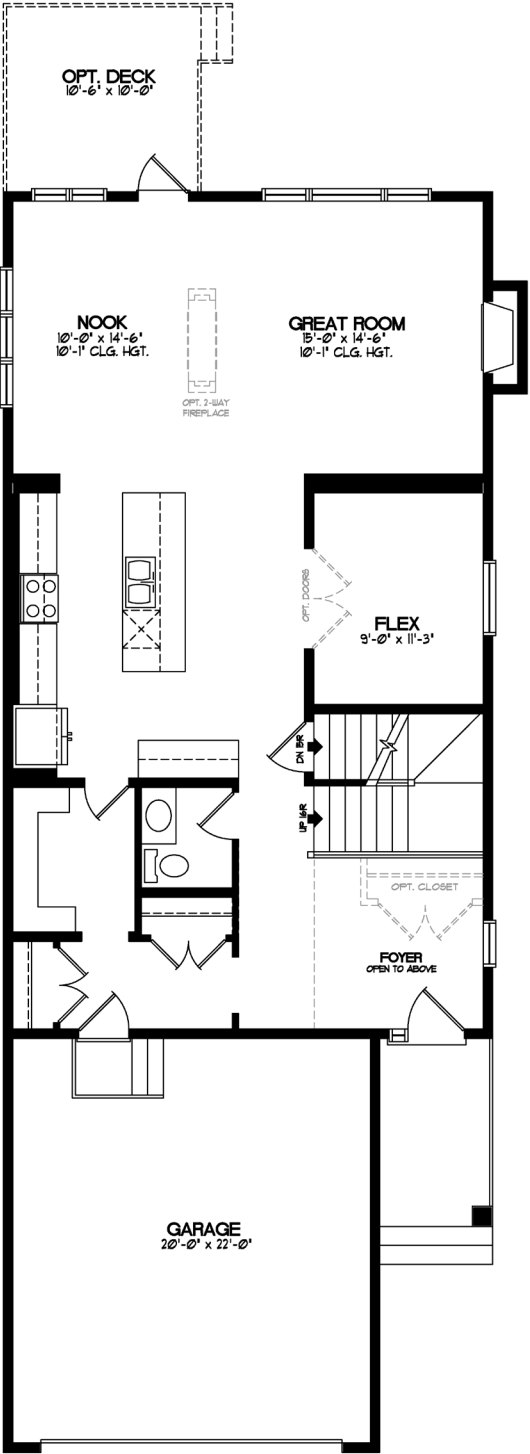


A QUALICO Company

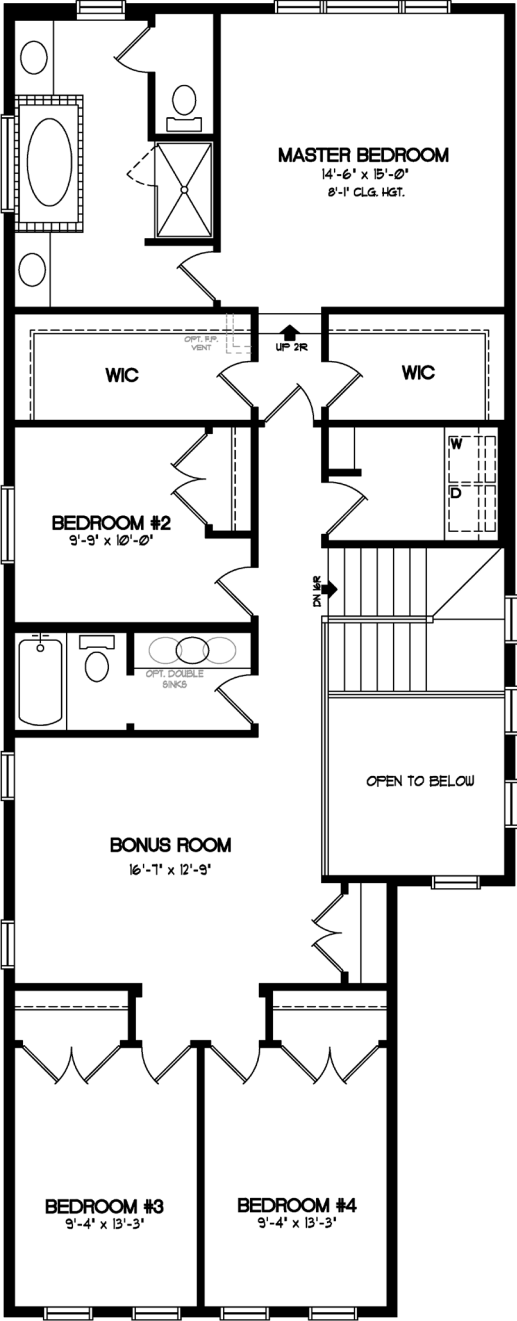
TALLYN

TWO STOREY 2629 SQ. FT.

The **Tallyn** features 2629 square feet of living space and is impressive from the start. A lofted Foyer welcomes guests at the front down, with a spacious Kitchen with Island, Walk-through Pantry, and handy Flex Room, and large Dining and Great Rooms are all on the Main Floor. The feature Staircase leads to the roomy second floor where you will find a generous Bonus Room, 3 large secondary Bedrooms, a Main Bath and Laundry Room. The Master Suite is set apart, with a feature entrance, Double Walk-in Closets, and a sparkling 5-piece En-suite



MAIN FLOOR - 1170 SQ. FT.



UPPER FLOOR - 1459 SQ. FT.

* Broadview Homes reserves the right to change plans, features and specifications without notice. Options NOT included except as specifically itemized in the purchase agreement. Standards/reversed plans at the sole discretion of the builder. Square footage is approximate. Elevations, features and square footages may vary by area. Photos of house may not be exactly as shown.

THE RIVERCREST STYLES

Welcome to Broadview Homes in picturesque Rivercrest, a scenic new neighbourhood on the sunny side of Cochrane.

The styles of Rivercrest have been carefully selected to create a friendly community with small town spirit and modern sensibilities. Broadview has created a line up of homes available in each architectural style so that you can choose a home that compliments your own tastes as well as the stunning valley views and nature found steps from your door.

Learn more about our Rivercrest styles here, and speak with a Broadview representative to find out more about how we can build you the home of your dreams, whatever they may be!



CRAFTSMAN

Growing out of the earth, the Craftsman style is an extension of its natural surroundings. Incorporating wood and stone, these traditional homes often feature distinctively sturdy columns and solid brackets to support rooflines that are slightly steeper in pitch. Other design elements such as shakes and vertical siding are often used to call to mind the decorative history of the style.



COLONIAL

This elevation is influenced by Georgian architecture and emphasizes symmetrical massing, or forms. A great mix of classic and modern tastes, colonial homes often include gable roofs, classical columns, brick work and individual windows that create an over all balanced look to the home.



FOUR SQUARE

This distinctive style harkens back to Frank Lloyd Wright and similar designs of the early 20th century in the American Mid-West. Homes are unique and simplistic with strong horizontal lines, shallow pitched roofs, and large overhanging eaves. Mason work, wide porches, and rows of windows with minimal detailing often stand out on Four Square homes.



Elevation is representation of given home style and may not be built exactly as shown.