

At Broadview Homes we believe that life's luxuries should come standard. Thoughtfully designed and built with the utmost care, you will find Broadview Homes gives you the best of both worlds. Each of our homes are customizable to ensure they fit your every need.



A QUALICO Company

Lorem ipsum

Showhome: 612 West Lakeview Drive

facebook.com/BroadviewHomes

broadviewhomes.com

follow us on   

ELSTON



WELCOME TO THE ELSTON

2659 SQ FT

4 BD 4 BTH

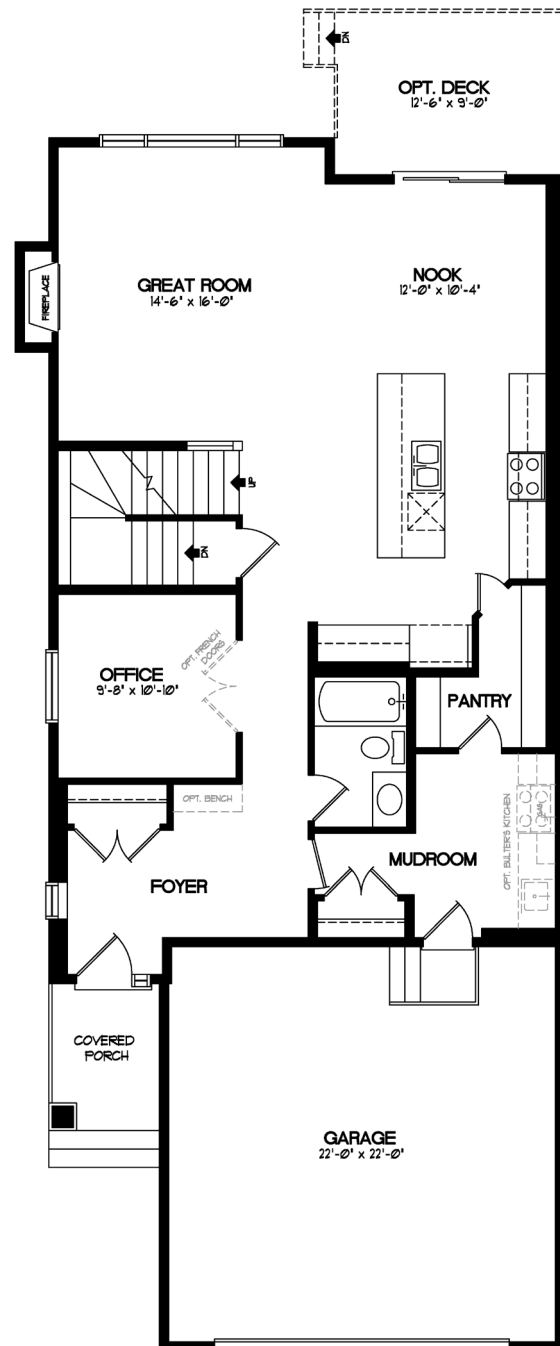
OPEN PLAN, TWO MASTERS



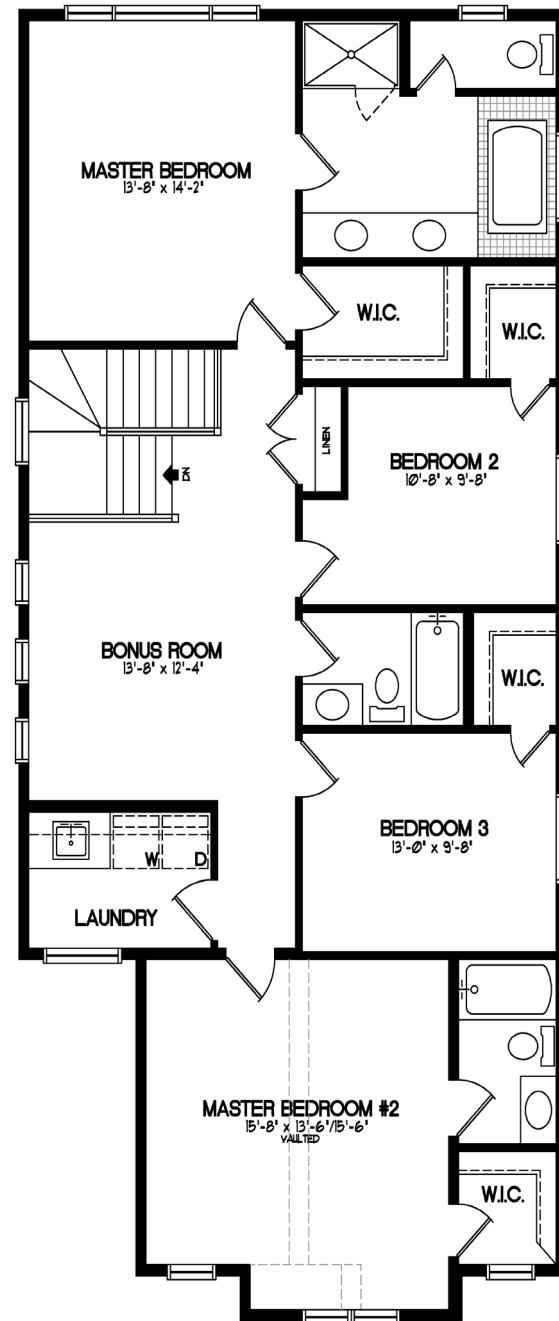
ELSTON

TWO STOREY 2659 SQ. FT.

The Elston is 2659 sq.ft with 4 Bedrooms, 4 FULL Bathrooms, and plenty of space and above-standard details throughout. The open Main Floor has a large Dining Nook, Great Room, Office, and Kitchen with Walk-through Pantry, as well as an optional Butler's Kitchen! The Upper floor includes 2 spacious Master Bedrooms with Walk-in Closets and En-suites and 2 additional Bedrooms, second floor Laundry and a large Central Bonus Room.



MAIN FLOOR - 1220 SQ. FT.



UPPER FLOOR - 1444 SQ. FT.

THE STYLES OF DAWSONS LANDING

Welcome to Dawson's Landing in Chestermere! Each Broadview Home is offered in four distinct architectural styles, giving you the ability to create the home that best suits your life and your style.

Dawson's Landing is a modern community that will accommodate all the needs evolving families have. With two future schools in the community, an eco-park wetland and many home styles to choose from, Dawson's Landing is the community families need in the lake city they've always wanted.



CRAFTSMAN

Growing out of the earth, the Craftsman style is an extension of its natural surroundings. Incorporating wood and stone, these traditional homes often feature distinctively sturdy columns and solid brackets to support rooflines that are slightly steeper in pitch. Other design elements such as shakes and vertical siding are often used to call to mind the decorative history of the style.



PRAIRIE

This distinctive style harkens back to Frank Lloyd Wright designs of the early 20th century. Unique and simplistic due to their square design, Prairie homes maintain their individuality through use of various heights and depths. Homes have low-pitched roofs with widely overhanging eaves. Prairie style emphasizes horizontal lines, square front porch supports, bands of casement windows, and decorative banding along exterior walls.



DUTCH COLONIAL

Historically finding its beginnings on the Northeastern corner of the United States, Dutch Colonial is one of the most easily distinguishable styles, given it's broad, double-pitched roof: changing angles several times to resemble a barn roof. Frequently utilizing shakes and simple trim, this style feels clean and coastal, while evoking a simple style from the past.



MID-CENTURY MODERN CONTEMPORARY

Mid Century Modern Contemporary homes offer plenty of room for creativity, with asymmetrical shapes seen in everything from rooflines to ornamentation. Often incorporating stucco, stone, brick or wood, the natural materials throughout encourage indoor/outdoor living. Large expanses of glass are featured against the minimalist facade where the emphasis is on expanding sightlines and character appeal.

Elevation is representation of given home style and may not be built exactly as shown.

* Broadview Homes reserves the right to change plans, features and specifications without notice. Options NOT included except as specifically itemized in the purchase agreement. Standards/reversed plans at the sole discretion of the builder. Square footage is approximate. Elevations, features and square footages may vary by area. Photos of house may not be exactly as shown.