




At Broadview Homes we believe that life's luxuries should come standard. Thoughtfully designed and built with the utmost care, you will find Broadview Homes gives you the best of both worlds. Each of our homes are customizable to ensure they fit your every need.



A QUALICO Company

Showhome: 384 Rivercrest View
facebook.com/BroadviewHomes
broadviewhomes.com
follow us on   

ASPEN III



WELCOME TO THE ASPEN III

2687 SQ FT

3 BD 2.5 BTH

OPEN CONCEPT WITH THIRD FLOOR OPT. PATIO



A QUALICO Company

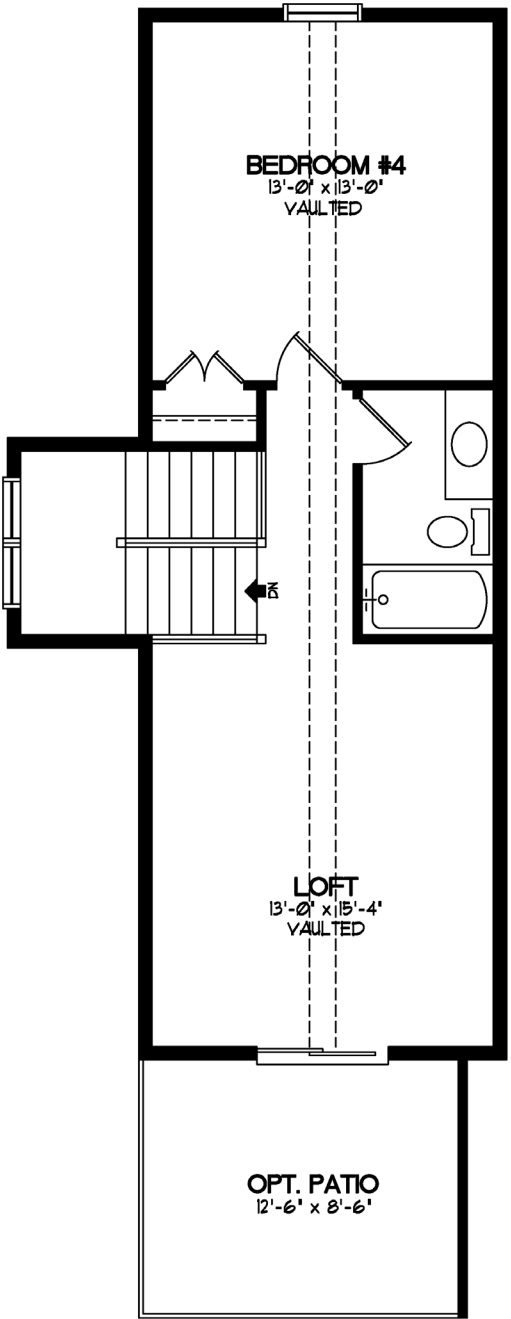
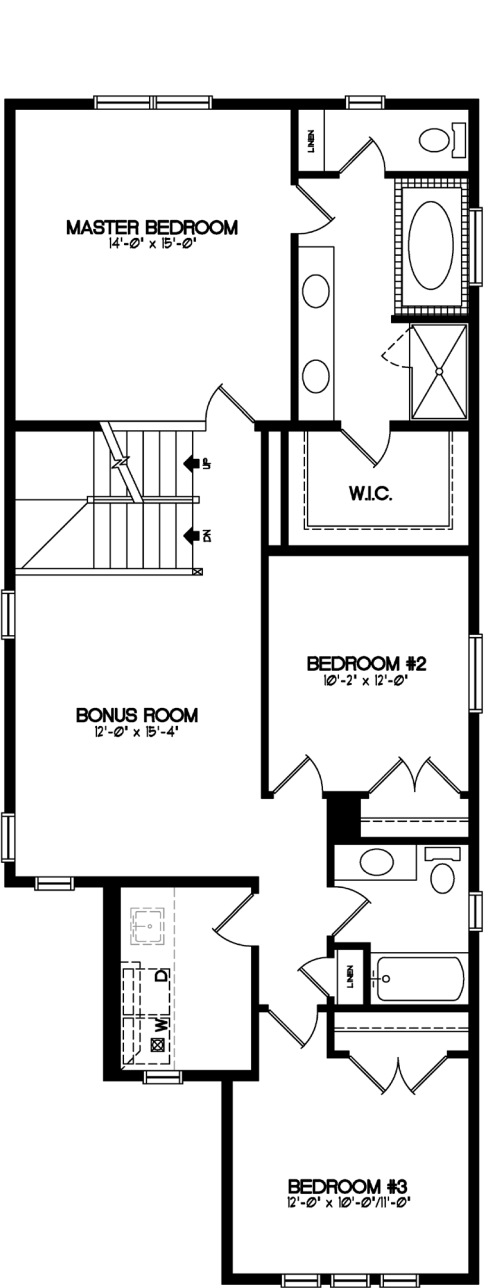
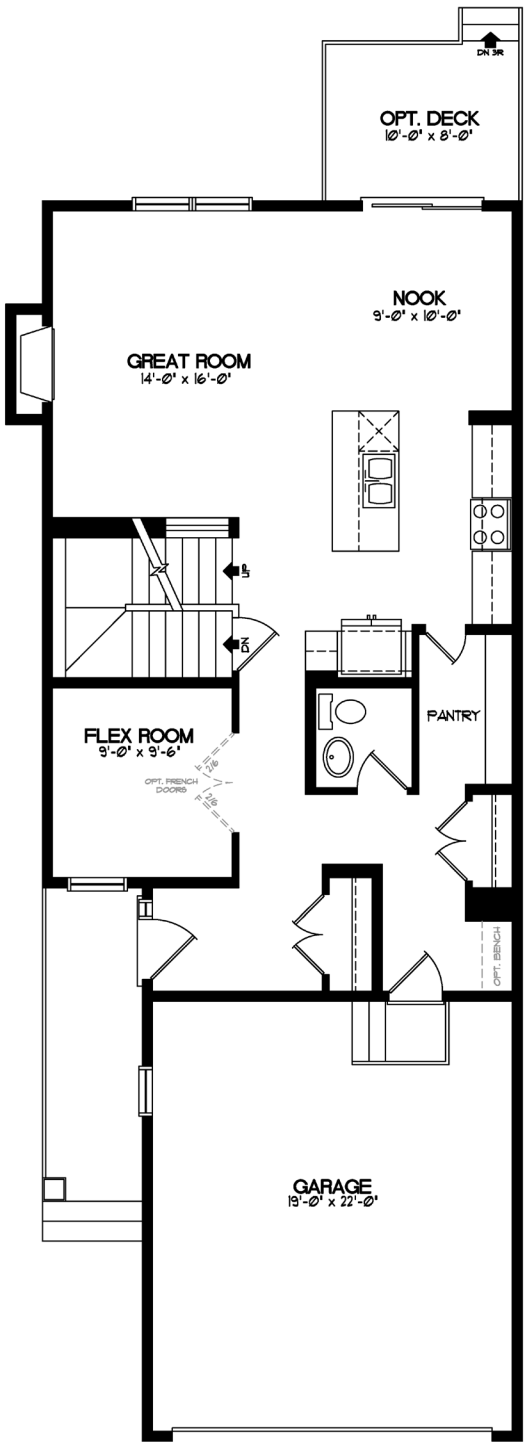
ASPEN III

TWO STOREY 2687 SQ. FT.

The Aspen III model features 2687 square feet of modern living space, starting with the open concept Main Floor, bright and spacious second level with a bonus third level that gives you the choice between Three floor plans to suit your living needs.

Entering through the Foyer or Walk-through Mudroom and Pantry, you will find the well-appointed Kitchen with Island, Great Room with Gas Fireplace, and Dining Nook with patio access a warm and welcoming main living space. The Main Floor is also home to a convenient Flex Room and Powder Room.

A wide stairway leads upstairs to the Bonus Room, Laundry, and Main Bathroom. The 3 spacious Bedrooms include your Master; with a gracious 5 piece Ensuite, separate water closet, and roomy Walk-in Closet, this is truly a retreat for you when you need it!



THE RIVERCREST STYLES

Welcome to Broadview Homes in picturesque Rivercrest, a scenic new neighbourhood on the sunny side of Cochrane.

The styles of Rivercrest have been carefully selected to create a friendly community with small town spirit and modern sensibilities. Broadview has created a line up of homes available in each architectural style so that you can choose a home that compliments your own tastes as well as the stunning valley views and nature found steps from your door.

Learn more about our Rivercrest styles here, and speak with a Broadview representative to find out more about how we can build you the home of your dreams, whatever they may be!



CRAFTSMAN

Growing out of the earth, the Craftsman style is an extension of its natural surroundings. Incorporating wood and stone, these traditional homes often feature distinctively sturdy columns and solid brackets to support rooflines that are slightly steeper in pitch. Other design elements such as shakes and vertical siding are often used to call to mind the decorative history of the style.



COLONIAL

This elevation is influenced by Georgian architecture and emphasizes symmetrical massing, or forms. A great mix of classic and modern tastes, colonial homes often include gable roofs, classical columns, brick work and individual windows that create an over all balanced look to the home.



FOUR SQUARE

This distinctive style harkens back to Frank Lloyd Wright and similar designs of the early 20th century in the American Mid-West. Homes are unique and simplistic with strong horizontal lines, shallow pitched roofs, and large overhanging eaves. Mason work, wide porches, and rows of windows with minimal detailing often stand out on Four Square homes.

* Broadview Homes reserves the right to change plans, features and specifications without notice. Options NOT included except as specifically itemized in the purchase agreement. Standards/reversed plans at the sole discretion of the builder. Square footage is approximate. Elevations, features and square footages may vary by area. Photos of house may not be exactly as shown.



Elevation is representation of given home style and may not be built exactly as shown.