

Broadview Homes is now pleased to offer a selection of stunning homes in Ambleton, located just North of Evanston, the local and regional pathway networks, pedestrian gathering spaces and play areas make getting around and exploring the community easy. Travel has never been safer because of the off-street pathways protected from vehicular traffic. With ample retail and schools in nearby Evanston.



A QUALICO Company

Lorem ipsum

Showhome: 129 & 133 Ambleside Heath NW

facebook.com/BroadviewHomes

broadviewhomes.com

follow us on   

Newport III



WELCOME TO THE NEWPORT III

1631 SQ FT

3 BD 2.5 BTH

OPEN FLOOR CONCEPT

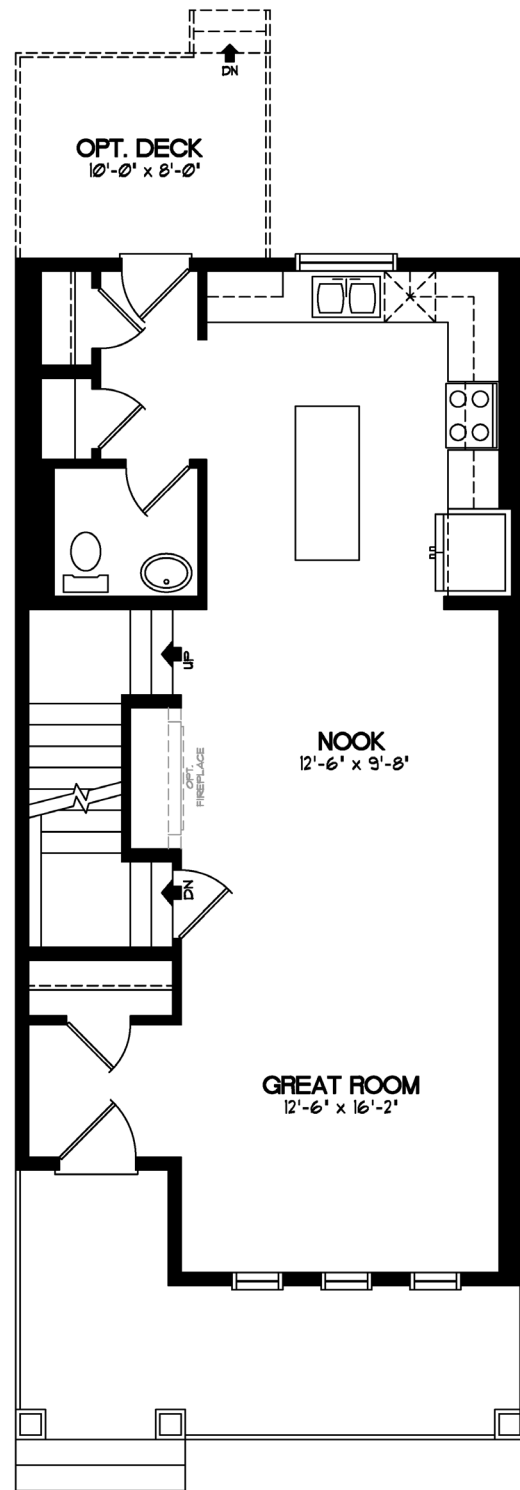


A QUALICO Company

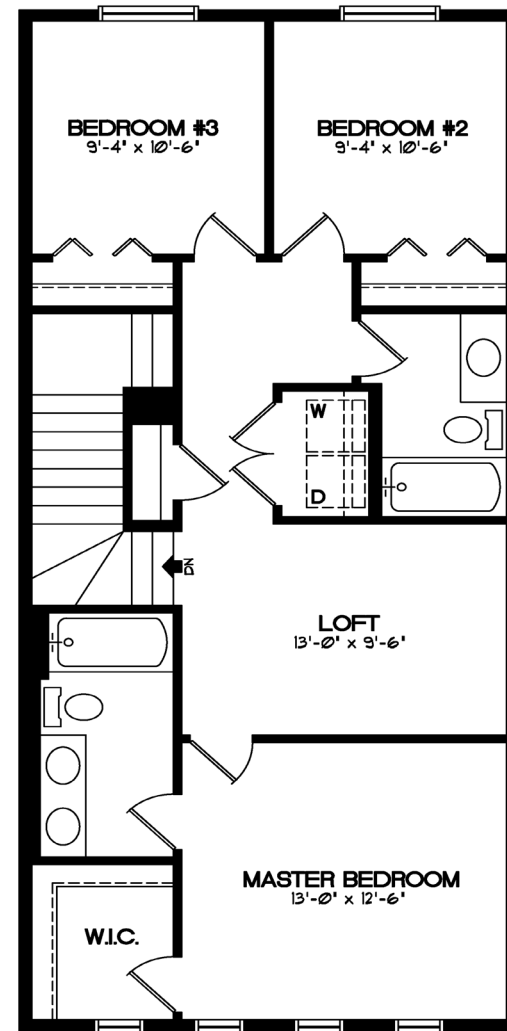
Newport III

TWO STOREY 1631 SQ. FT.

The **Newport III** has 1631 sq. ft. of living space with 3 bedrooms, 2.5 baths, unique stairwell off of open main floor, upper central Loft and Laundry, spacious kitchen with soft-close cabinetry. The bright and airy master features an extra-large walk-in closet and private En-suite.



MAIN FLOOR - 773 SQ. FT.



UPPER FLOOR - 858 SQ. FT.

THE AMBLETON STYLES

Welcome to Ambleton, where each Broadview Home is offered in four distinct architectural styles, giving you the ability to create the home that best suits your life and your style.

The styles selected for Ambleton are classic with a fresh modern twist, allowing residents to choose a home that fits their own personal taste. Read all about the hallmark features of each style below, then speak with your Broadview representative to learn more about how we can build your ideal home in your preferred style.



CRAFTSMAN

Stemming from the 19th century American architectural philosophy, Craftsman homes generally feature a low-pitched roof and wide eave overhang, with exposed roof rafters and decorative beams or braces under the gables. Columns are very important and frequently extend to ground level. False beams and/or brackets are encouraged as roof supports while stone may appear as an element but not as a full façade. Exterior choices are vinyl siding, Hardi board, Allura siding, or stucco.



FARMHOUSE

A favourite for its manor-style features, French Country is now available in Broadview's Ambleton's lineup. With simple detailing compared to other styles, Farmhouse homes feature steeply pitched gable or cottage roofs. Round, arched porches lead to entry ways while window grills and batten detailing frame the windows. Stucco exteriors offset the subtle details of this distinguished style.



MID CENTURY MODERN

Created with the intention of bringing the outdoors 'in', Mid Century Modern homes emphasize generous windows and open floor plans, with rooms often opening onto patios to extend sightlines and square footage. Unusual roof angles characterize these homes. Mid Century Modern doors are either single pane glass, wood with character openings, or sliders. Minimal detailing keeps the façade clean and stone is minimal, if present at all.



PRAIRIE

This distinctive style harkens back to Frank Lloyd Wright designs of the early 20th century. Unique and simplistic due to their square design, Prairie homes maintain their individuality through use of various heights and depths. Homes have low pitched roofs with widely overhanging eaves. Prairie style emphasizes horizontal lines, square front porch supports, bands of casement windows, and decorative banding along exterior walls. Exterior cladding is to be vinyl siding, Hardi board,

Elevation is representation of given home style and may not be built exactly as shown.

* Broadview Homes reserves the right to change plans, features and specifications without notice. Options NOT included except as specifically itemized in the purchase agreement. Standards/reversed plans at the sole discretion of the builder. Square footage is approximate. Elevations, features and square footages may vary by area. Photos of house may not be exactly as shown.